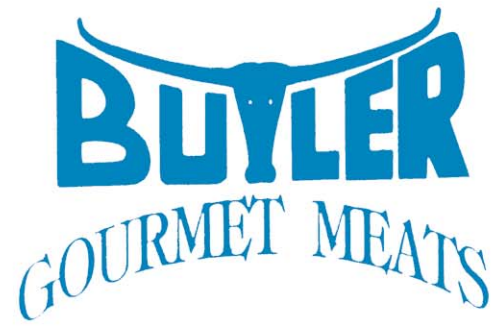


Pork

1/2 or Whole Hogs



Buying a 1/2 or whole hog saves you money. Butler Gourmet Meats harvests the very finest pork, and cuts & wraps it to your specification. We also use our No Nitrate maple sugar cure Hickory Smoke on all of the cured products like the hams & bacons.

Yield Items

- **Pork Chops**
- **Pork Roasts**
- **Pork Steaks**
- **Pork Spare Ribs**
- **Pork Sausage**
- **Country Style (C/S) Ribs**
- **Ham Hocks**
- **Hickory Smoked Hams**
- **Hickory Smoked Bacon**

Call For Pricing And Enjoy Yours Today.

<i>1/2 Approximately</i>	-	<i>90 lbs</i>
<i>Whole Approximately</i>	-	<i>180 lbs</i>

** Hanging weight subject to cutting loss*